

- WORK NOTES:**
- INSTALL 5/8" GYP. BD. ON EXISTING STEEL STUD FRAMING
 - NEW FULL HGT. STUD WALLS TO SEPARATE THE STAIR RUNS - PROVIDE 1 1/2" DIA. STEEL PIPE HANDRAILS ON BOTH SIDES OF EACH STAIR
 - WALL MOUNTED ADJUSTABLE SHELVES - PROVIDE (5) SHELVES PER WALL
 - UPPER AND LOWER CABINETS - SEE CABINET DETAILS
 - UPPER CABINETS - SEE CABINET DETAILS
 - SHELF AND POLE - SEE CABINET DETAILS
 - 15"x15"x9" STAINLESS STEEL SINK WITH GOOSENECK FACET
 - 30"x15"x9" STAINLESS STEEL DOUBLE SINK WITH GOOSENECK FACET
 - 4" FLOOR DRAIN - DISH FLOOR SLAB AROUND DRAIN (D7 D7A)
 - EXISTING DOOR TO REMAIN - REVISE HARDWARE TO ADD ALARM TO BE TIED INTO SECURITY SYSTEM
 - EXISTING DOOR TO REMAIN - REVISE HARDWARE TO ADD ELECTRIC STRIKE TO BE COMPATIBLE WITH SECURITY SYSTEM
 - 3'x5' FIBERGLASS SHOWER UNIT WITH LOW PROFILE THRESHOLD AND HANDICAPPED ACCESSIBLE ACCESSORIES TO MEET ANS1 108
 - LOWER CABINETS (34" HIGH) WITH 18" OVAL PORCELAIN SINK AND LEVEL TYPE FAUCET
 - FULL SIZED WASHER AND DRYER WITH CONTROLS TO MEET ANS1 111 FOR HANDICAPPED ACCESSIBILITY
 - 24" FOUR BURNER ELECTRIC STOVE / OVEN TO MEET ANS1 103.12.6.4 AND 103.12.6.4 FOR HANDICAPPED ACCESSIBILITY
 - 60"x36"x72" HIGH FIBERGLASS BATH TUB AND SURROUND TO MEET ANS1 103.11.8 - PROVIDE BLOCKING FOR FUTURE GRAB BARS
 - TANK TYPE TOILET TO MEET ANS1 103.11.7 HANDICAPPED REQUIREMENTS - PROVIDE BLOCKING FOR FUTURE GRAB BARS
 - REFRIGERATOR / FREEZER TO MEET ANS1 103.12.6 HANDICAPPED REQUIREMENTS - LOWEST SHELF OF FREEZER TO BE A MAX. OF 54" ABOVE THE FINISHED FLOOR.

- GENERAL NOTES**
- ALL INTERIOR WALLS TO BE 3 5/8" OR 6" METAL STUDS @ 16" O.C. (SEE FLOOR PLAN FOR SIZE) W/ 5/8" GYPSUM BOARD BOTH SIDES - EXTEND TO BOTTOM CHORD OF TRUSSES.
 - PROVIDE 3 1/2" SOUND BATT INSULATION AROUND PERIMETER ALL WALLS.
 - MISCELLANEOUS HARDWARE INCLUDED: HANDICAP HARDWARE.
 - PROVIDE WOOD BLOCKING FOR ANY FURNISHINGS BY OWNER. (VERIFY LOCATIONS)
 - ALL EXTERIOR WINDOWS TO HAVE ALUMINUM FLASHING RETURNS AT HEAD, JAMBS, AND SILL OF ALL WINDOWS.
 - INTERIOR GLAZED OPENINGS IN OFFICES TO BE 1/4" GLASS SET IN HOLLOW METAL FRAMES.
 - ALL CABINETS AND COUNTERTOPS TO HAVE PLASTIC LAMINATE FRONTS AND TOPS.
 - KITCHEN AND CABINET W/ COUNTERS BY GENERAL CONTRACTOR AS REQUIRED

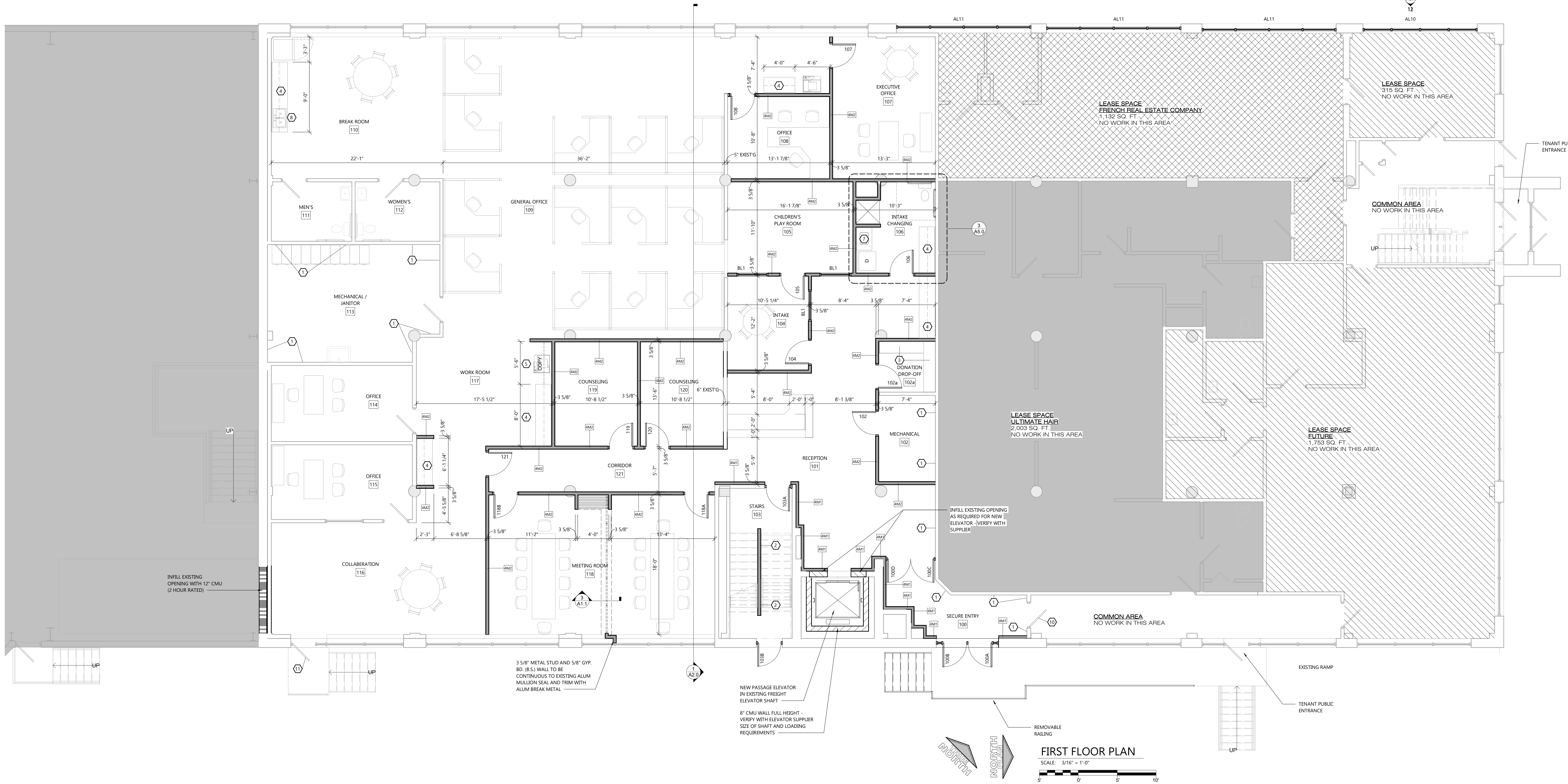
EXCEL
ARCHITECTS • ENGINEERS • SURVEYORS
Always a Better Plan
100 Camelot Drive
Fond Du Lac, WI 54935
Phone: (920) 926-8800
www.EXCELENGINEER.com

COLLABORATION

WDS
CONSTRUCTION

PROJECT INFORMATION

PROPOSED ALTERATION FOR:
PAVE
111 EAST BURNETT STREET • BEAVER DAM, WI



PROFESSIONAL SEAL

PRELIMINARY DATES

- AUG. 14, 2019
- AUG. 15, 2019
- AUG. 22, 2019
- FEB. 14, 2020
- FEB. 24, 2020
- APR. 1, 2020

NOT FOR CONSTRUCTION

JOB NUMBER
2004640

SHEET NUMBER
A1.1

2019 © EXCEL ENGINEERING, INC.

C:\Users\jcmurphy\Documents\2004640_111 East Burnett.dwg, Job: General, PLOT: 08/07/2019 10:54:44 AM